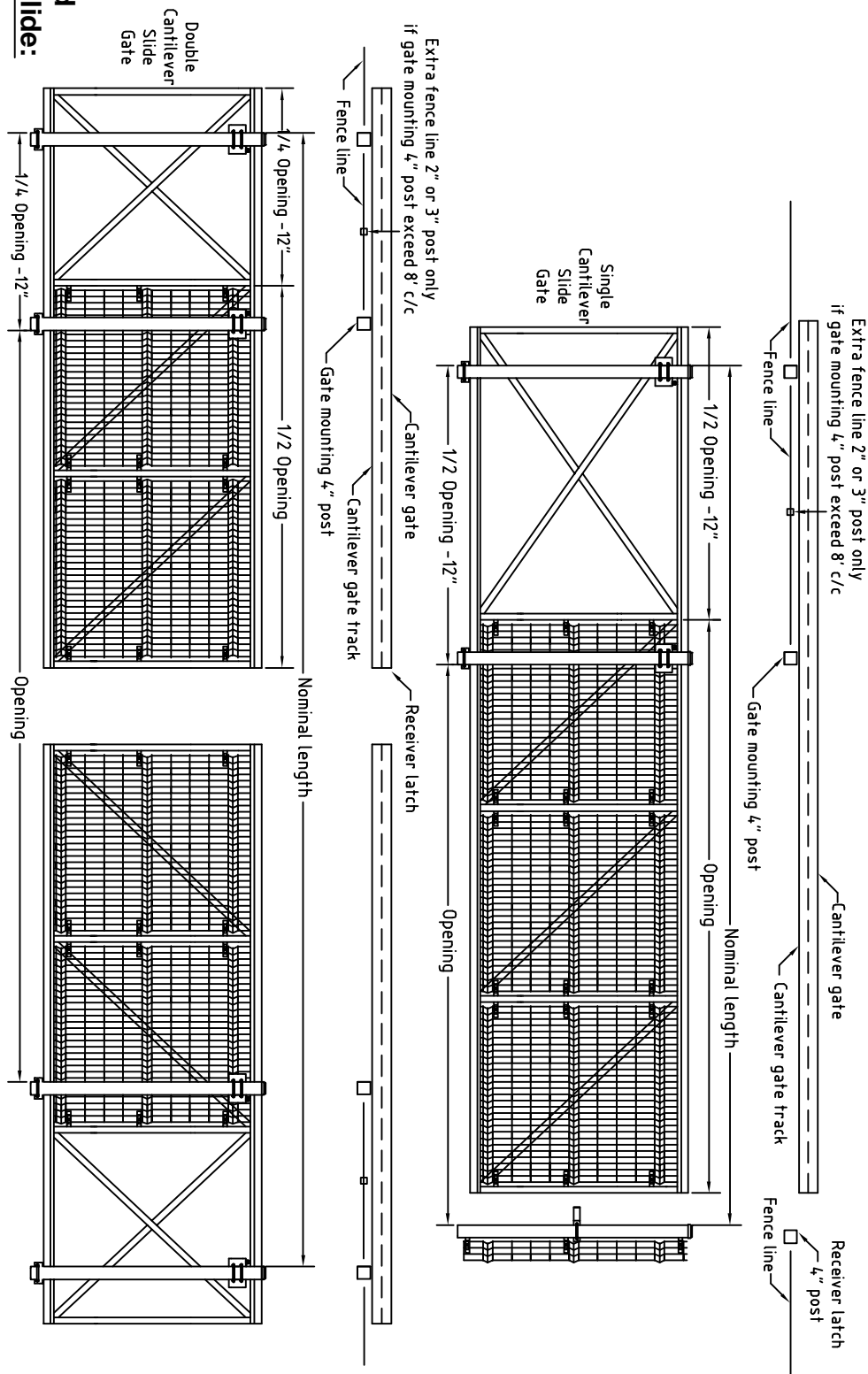


## Single and Double Tube Braced Cantilever slide gate with Omega Architectural panel



### Tube Braced Cantilever Slide:

The Aluminum Cantilever Gates are constructed with the exclusive upper and lower Zip Track™, fabricated from extrusions of 6061-t6 aluminum alloy. The upper track weighs 5.816 #/L.F. and the lower track weighs 3.22 #/L.F. The upper and lower tracks shall be welded and/or bolted to 2"x2"x.125 wall sq. aluminum tube, which weighs 1.12 #/L.F. Each front section shall have one diagonal brace of 1"x2"x.125 wall aluminum tube, which weighs .822 #/L.F. Each tail section of the gate shall be x-braced with two 1"x2"x.125 wall aluminum tube, which weighs .822 #/L.F. Our standard colors, utilizes the TGIC polyester powder-coat finish. The fabric shall be held in place by SPF-W brackets. Gates with barwire shall use brace bands and bolts to hold the wire in place. This meets or exceeds specifications 603.8 of the Architectural Aluminum Manufacturers Association. Aluminum Cantilever Gates are also available in aluminum mill finish and can be ordered as modular/knock-down gates, ideal for transporting tall gates. These come ready to assemble with all holes predrilled for 3/8" stainless-steel grade 8 bolts, which are supplied for assembly. These modular sections shall slide into the upper and lower tracks and bolt into place.

### Gate posts:

4" galvanized steel square posts weighing 6.33 lb/ft with minimum 1.8 ounce/ft zinc coating meeting ASTM F1234. The steel meets ASTM A500, Grade B with a minimum yield strength of 40,000 psi requirement. Provide 1 latch post and 2 support posts for single slide gate and 4 support posts for double slide gates.